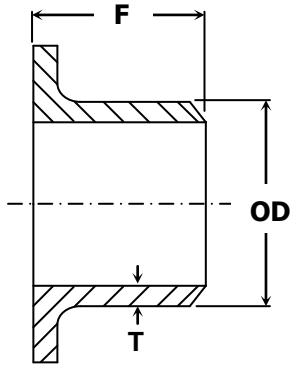


# NOMINAL BORE FITTINGS

The range of Nominal Bore fittings listed below are available from stock in sizes 1/2" N.B. to 12" N.B. in both 304L and 316L. Larger sizes available on special delivery.

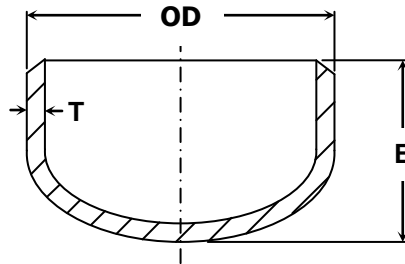
Separate information sheets covering Nominal Bore Pipe, BSP Fittings and Flanges are also available. Please contact our sales desk for details.

## STUB ENDS



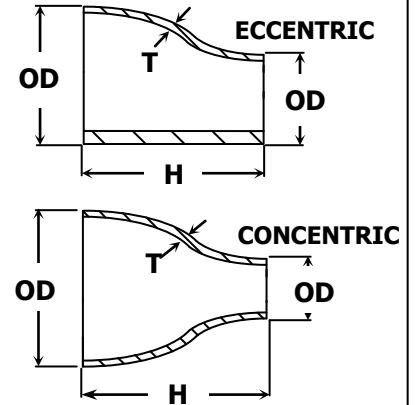
| N.B. Pipe Size | OD mm | F mm  | Wall (T) mm |       |       |
|----------------|-------|-------|-------------|-------|-------|
|                |       |       | Sch5        | Sch10 | Sch40 |
| 1/2"           | 21.3  | 50.8  | 1.65        | 2.11  | 2.77  |
| 3/4"           | 26.7  | 50.8  | 1.65        | 2.11  | 2.87  |
| 1"             | 33.4  | 50.8  | 1.65        | 2.77  | 3.38  |
| 1 1/2"         | 48.3  | 50.8  | 1.65        | 2.77  | 3.68  |
| 2"             | 60.3  | 63.5  | 1.65        | 2.77  | 3.91  |
| 2 1/2"         | 73.0  | 63.5  | 2.11        | 3.05  | 5.16  |
| 3"             | 88.9  | 63.5  | 2.11        | 3.05  | 5.49  |
| 4"             | 114.3 | 76.2  | 2.11        | 3.05  | 6.02  |
| 6"             | 168.3 | 88.9  | 2.77        | 3.40  | 7.11  |
| 8"             | 219.1 | 101.6 | 2.77        | 3.76  | 8.18  |
| 10"            | 273.0 | 127.0 | 3.40        | 4.19  | 9.27  |
| 12"            | 323.9 | 152.4 | 3.96        | 4.57  | 9.27  |
| 14"            | 355.6 | 152.4 | 3.96        | 4.78  | 9.27  |
| 16"            | 406.4 | 152.4 | 4.19        | 4.78  | 9.27  |
| 18"            | 457.2 | 152.4 | 4.19        | 4.78  | 9.27  |
| 20"            | 508.0 | 152.4 | 4.78        | 5.54  | 9.27  |
| 24"            | 609.6 | 152.4 | 5.54        | 6.35  | 9.27  |

## CAPS



| N.B. Pipe Size | OD mm | F mm  | Wall (T) mm |       |       |
|----------------|-------|-------|-------------|-------|-------|
|                |       |       | Sch5        | Sch10 | Sch40 |
| 1/2"           | 21.34 | 25.4  | 1.65        | 2.11  | 2.77  |
| 3/4"           | 26.67 | 25.4  | 1.65        | 2.11  | 2.87  |
| 1"             | 33.40 | 38.1  | 1.65        | 2.77  | 3.38  |
| 1 1/2"         | 48.26 | 38.1  | 1.65        | 2.77  | 3.68  |
| 2"             | 60.33 | 38.1  | 1.65        | 2.77  | 3.91  |
| 2 1/2"         | 73.0  | 38.1  | 2.11        | 3.05  | 5.16  |
| 3"             | 88.9  | 50.8  | 2.11        | 3.05  | 5.49  |
| 4"             | 114.3 | 63.5  | 2.11        | 3.05  | 6.02  |
| 6"             | 168.3 | 88.9  | 2.77        | 3.40  | 7.11  |
| 8"             | 219.1 | 101.6 | 2.77        | 3.76  | 8.18  |
| 10"            | 273.0 | 127.0 | 3.40        | 4.19  | 9.27  |
| 12"            | 323.9 | 152.4 | 3.96        | 4.57  | 9.27  |
| 14"            | 355.6 | 165.1 | 3.96        | 4.78  | 9.27  |
| 16"            | 406.4 | 177.8 | 4.19        | 4.78  | 9.27  |
| 18"            | 457.2 | 203.2 | 4.19        | 4.78  | 9.27  |
| 20"            | 508.0 | 228.6 | 4.78        | 5.54  | 9.27  |
| 24"            | 609.6 | 266.7 | 5.54        | 6.35  | 9.27  |

## REDUCER



Nominal Pipe sizes  
Large End x Small End x length (h) in inches

|                          |                  |
|--------------------------|------------------|
| 1" x 3/8" x 2"           | 4" x 2 1/2" x 4" |
| 1" x 1/2" x 2"           | 4" x 3" x 4"     |
| 1" x 3/4" x 2"           | 5" x 4" x 5"     |
| 1 1/2" x 1/2" x 2 1/2"   | 6" x 3" x 5 1/2" |
| 1 1/2" x 3/4" x 2 1/2"   | 6" x 4" x 5 1/2" |
| 1 1/2" x 1" x 1 1/2"     | 8" x 4" x 6"     |
| 2" x 3/4" x 3"           | 8" x 6" x 6"     |
| 2" x 1" x 3"             | 10" x 4" x 7"    |
| 2" x 1 1/4" x 3"         | 10" x 6" x 7"    |
| 2" x 1 1/2" x 3"         | 10" x 8" x 7"    |
| 2 1/2" x 1" x 3 1/2"     | 12" x 6" x 8"    |
| 2 1/2" x 1 1/2" x 3 1/2" | 12" x 8" x 8"    |
| 2 1/2" x 2" x 3 1/2"     | 12" x 10" x 8"   |
| 3" x 1 1/2" x 3 1/2"     |                  |
| 3" x 2" x 3 1/2"         |                  |
| 3" x 2 1/2" x 3 1/2"     |                  |
| 4" x 1 1/2" x 4"         |                  |
| 4" x 2" x 4"             |                  |

Visit our web site – <http://www.allstainlessltd.co.uk>