

ALL STAINLESS LIMITED

21 CAMFORD WAY
SUNDON PARK
LUTON, BEDS
LU3 3AN

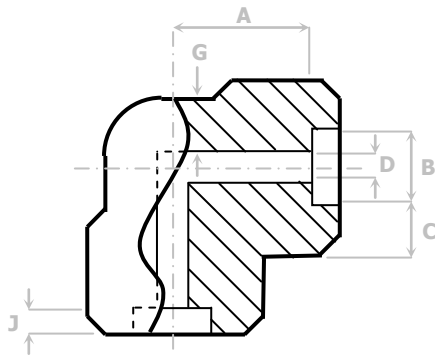
TELEPHONE: 01582 584075

FACSIMILE: 01582 585234

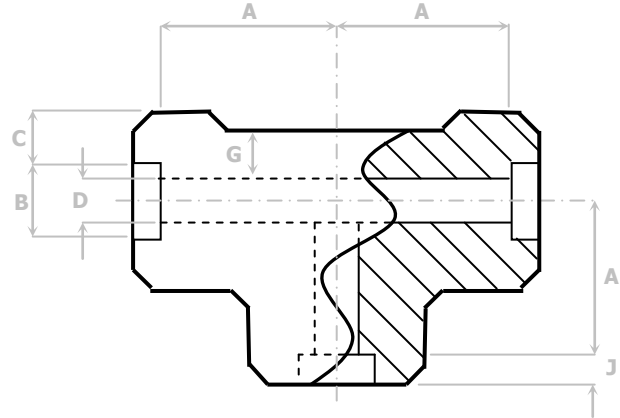
E-MAIL: INFO@ALLSTAINLESSLTD.CO.UK

INFORMATION SHEET

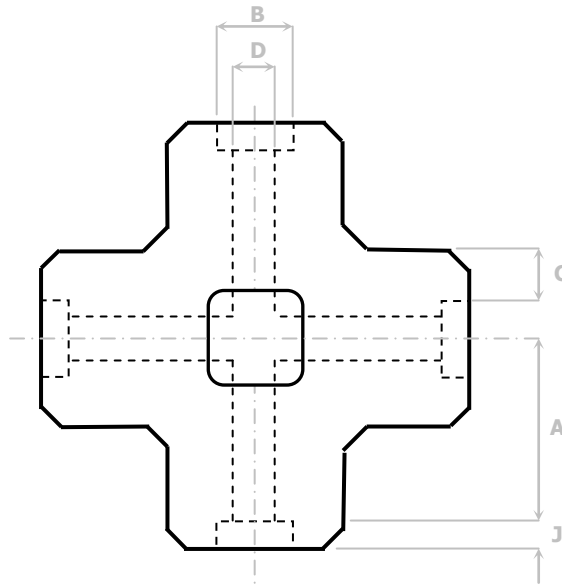
SOCKET WELD FITTINGS



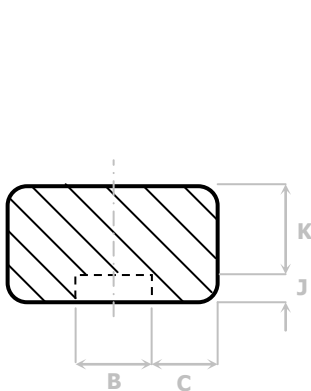
90° ELBOW



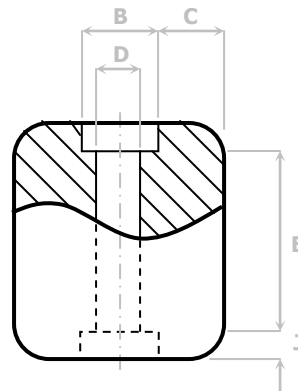
EQUAL TEE



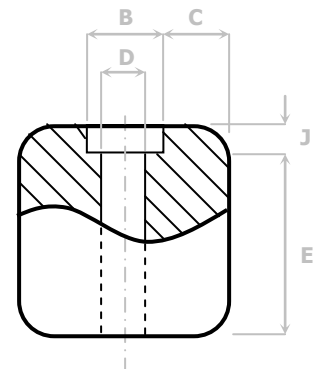
EQUAL CROSS



END CAP



FULL COUPLING



HALF COUPLING

3000Lb Socket Weld Fittings – BS3799 Dimensions

NPS	Max / Ave / Min	Centre to Bottom of Socket		Socket Bore Diameter	Bore Diameter of Fittings	Socket Wall Thickness	Body Wall	Depth of socket	Laying Lengths		Cap End Wall Thickness								
		90° Elbows, Tees & Crosses	45° Elbows						Couplings	Half Couplings									
		A	A									B	D	C	G	J	E	F	K
		mm	mm									mm	mm	mm	mm	mm	mm	mm	mm
1/8"	Max	12	9	11.15	7.6	-	-	-	8	17	-								
	Ave	-	-	-	-	3.2	-	-	-	-	4 ¹								
	Min	10	7	10.65	6.1	3.2	2.4	10	5	15	5.0								
1/4"	Max	12	9	14.60	10.0	-	-	-	8	17	-								
	Ave	-	-	-	-	3.8	-	-	-	-	7 ¹								
	Min	10	7	14.10	8.5	3.3	3.0	10	5	15	5.0								
3/8"	Max	15	9	18.05	13.3	-	-	-	9	19	-								
	Ave	-	-	-	-	4.0	-	-	-	-	7 ¹								
	Min	12	6	17.55	11.8	3.5	3.2	10	3	16	5.0								
1/2"	Max	17	13	22.20	16.6	-	-	-	13	24	-								
	Ave	-	-	-	-	4.65	-	-	-	-	8 ¹								
	Min	14	10	21.70	15.0	4.1	3.75	10	6	21	6.5								
3/4"	Max	21	14	27.55	21.7	-	-	-	13	25	-								
	Ave	-	-	-	-	4.9	-	-	-	-	10 ¹								
	Min	18	11	27.05	20.2	4.25	3.9	13	6	22	6.5								
1"	Max	24	16	34.30	27.4	-	-	-	17	31	-								
	Ave	-	-	-	-	5.7	-	-	-	-	11 ¹								
	Min	20	12	33.80	25.9	5.0	4.55	13	9	27	9.5								
1 1/4"	Max	29	19	43.05	35.8	-	-	-	17	32	-								
	Ave	-	-	-	-	6.05	-	-	-	-	13 ¹								
	Min	25	15	42.55	34.3	5.3	4.85	13	9	28	9.5								
1 1/2"	Max	34	23	49.15	41.7	-	-	-	17	34	-								
	Ave	-	-	-	-	6.35	-	-	-	-	14 ¹								
	Min	30	19	48.65	40.1	5.55	5.1	13	9	30	11.0								
2"	Max	40	27	61.60	53.5	-	-	-	23	43	-								
	Ave	-	-	-	-	6.95	-	-	-	-	18 ¹								
	Min	36	23	61.10	51.7	6.05	5.55	16	15	39	12.5								
2 1/2"	Max	44	31	47.45	64.2	-	-	-	24	45	-								
	Ave	-	-	-	-	8.75	-	-	-	-	21 ¹								
	Min	39	27	73.80	61.2	7.65	7.0	16	14	40	16.0								
3"	Max	60	34	90.40	79.5	-	-	-	24	47	-								
	Ave	-	-	-	-	9.5	-	-	-	-	24 ¹								
	Min	55	29	89.30	76.4	8.3	7.6	16	14	42	19.0								
4"	Max	69	44	116.05	103.8	-	-	-	24	50	-								
	Ave	-	-	-	-	10.7	-	-	-	-	-								
	Min	64	39	115.45	100.7	9.35	8.55	19	14	45	22.0								

Note:
 - Dimensions and tolerances shown are as specified in ASME/ANSI B16.11-1991. These agree substantially with BS3799: 1974. Exceptions are indicated in the following note.
 - BS3799 does not cover NPS 4